



● ● ●

PROTAPER®

UNIVERSAL

Recommended

Sequence of use

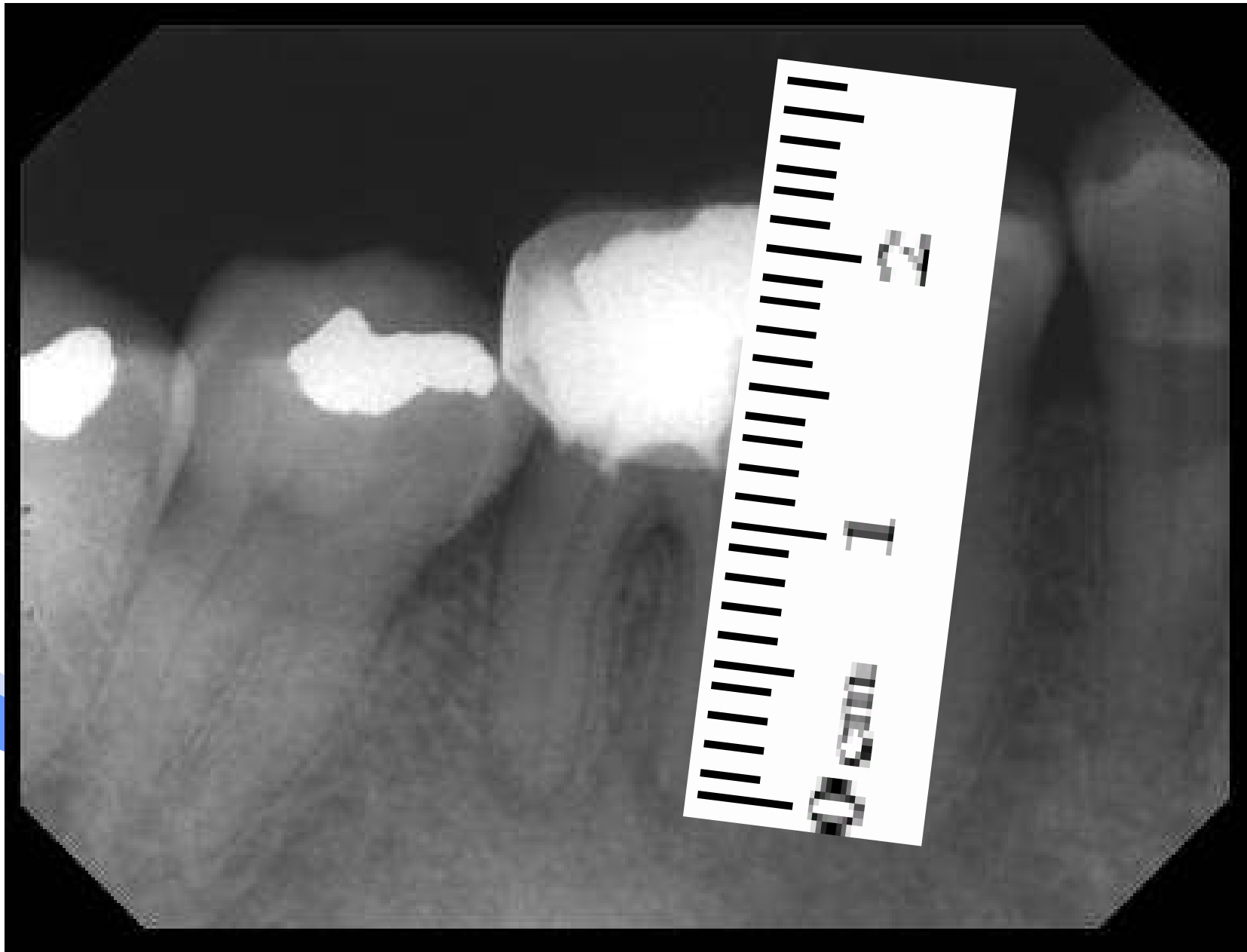
Sequence of use



For better dentistry

DENTSPLY

Measure length of tooth from preoperative radiograph



Glide path

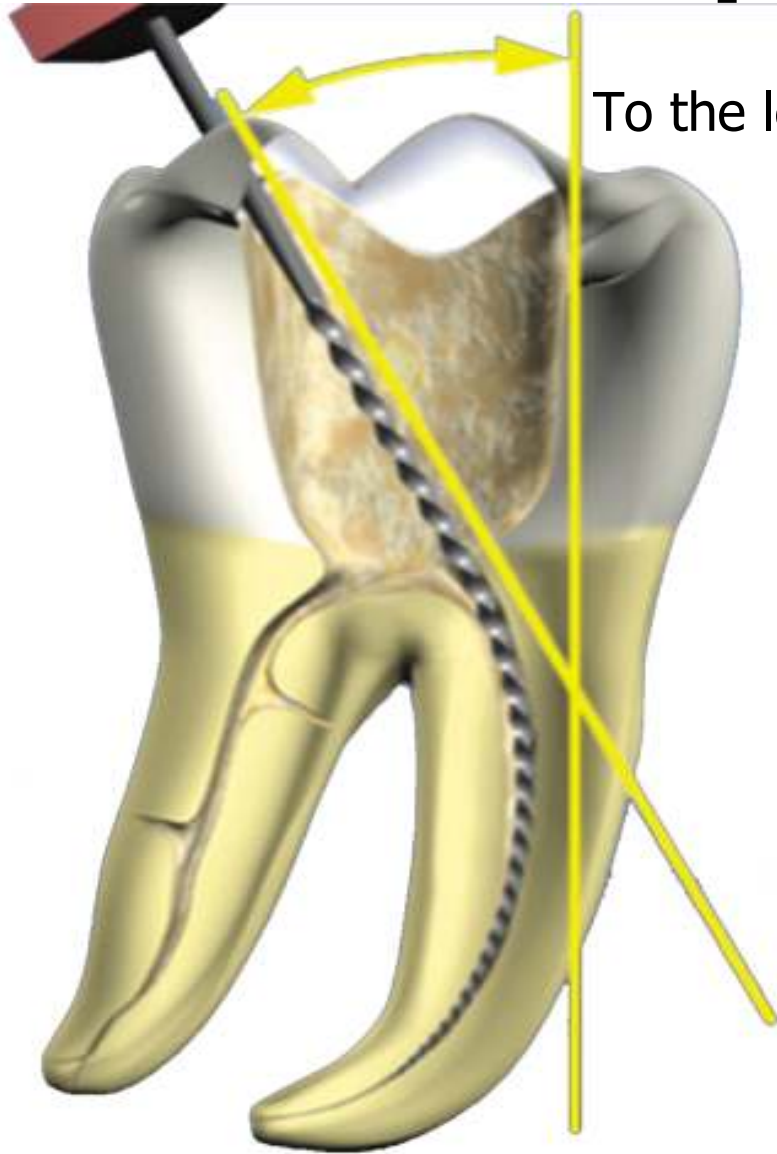
The purpose of a “glide path” :

To **navigate** and **establish a pathway within the root canal** using the long axis of a small precurved file with a **short in** and **out motion**.

For better dentistry

DENTSPLY

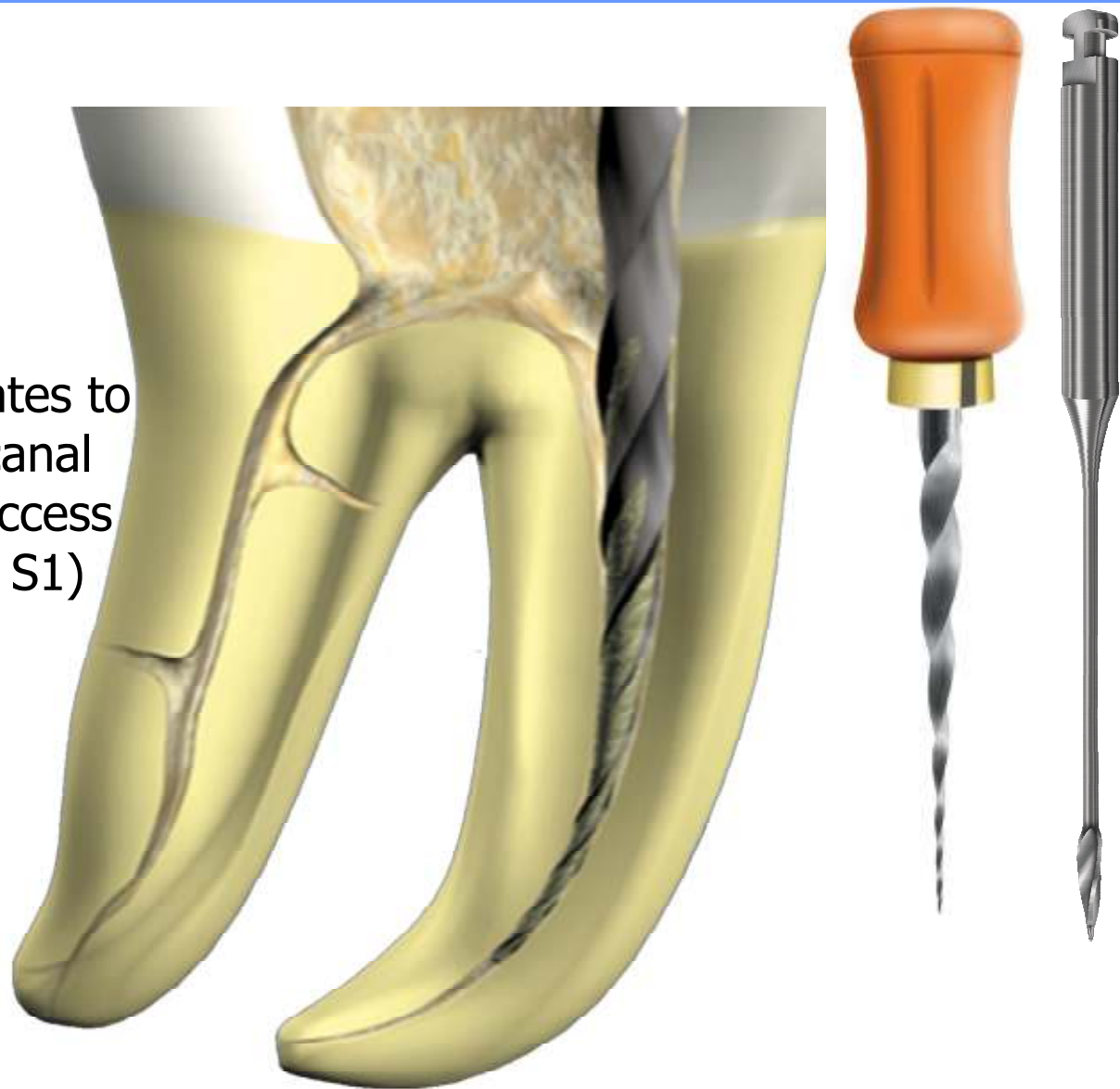
1- Scout the canal with hand files 10 & 15
Or with ProFinder Files 13 & 17
To the level of 3 - 4 mm from the radiographic apex



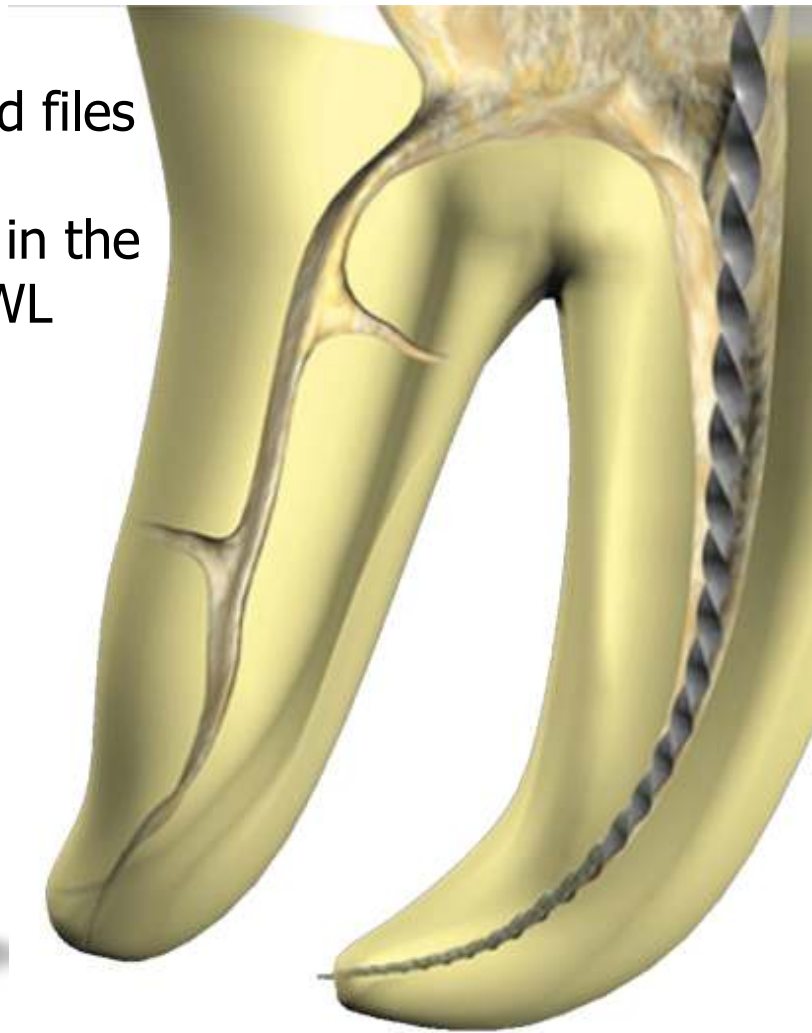


2- Use S1 and enlarge the canal *no deeper* than the level of penetration of size 15 hand File (to make sure that the tip of S1 is never blocked)

3- If needed, use SX or X-gates to enlarge the orifice of the canal and Create a straight line access (don't use Sx deeper than S1)

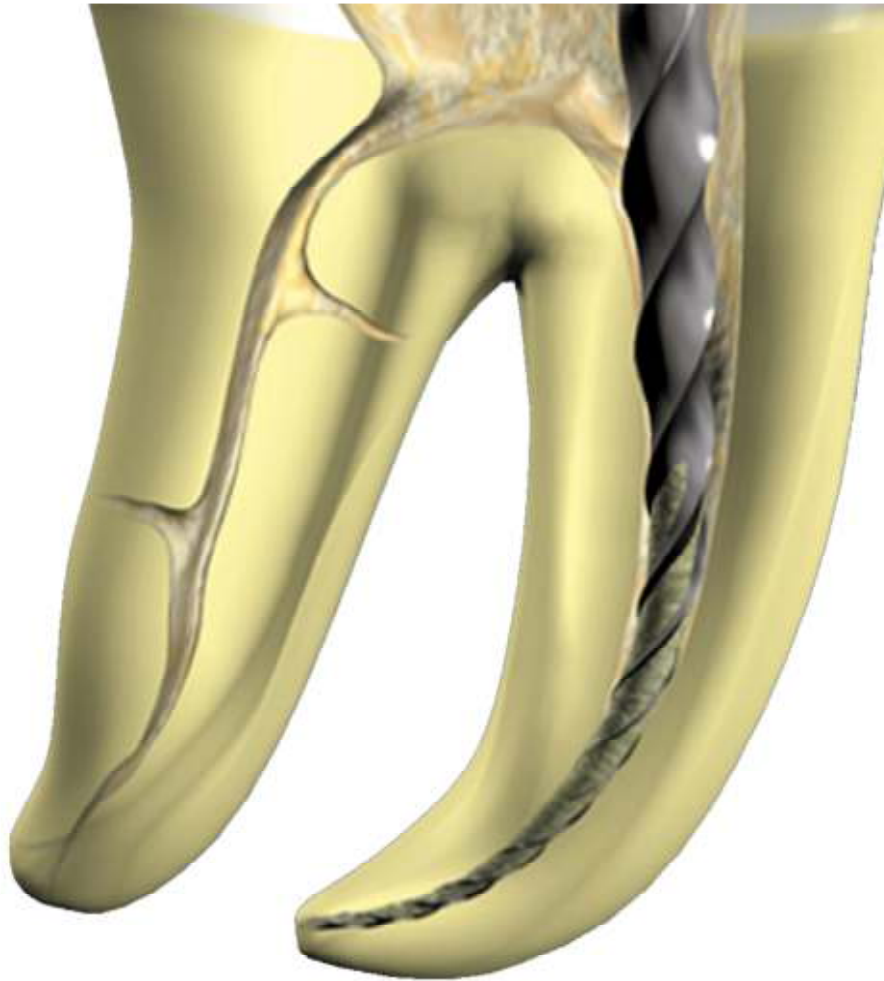


4- Use stainless steel hand files
10 & 15
Or ProFinder Files deeper in the
canal and determine WL



5- After going to length with a stainless steel file **size 15**, use *S1 to working length*,

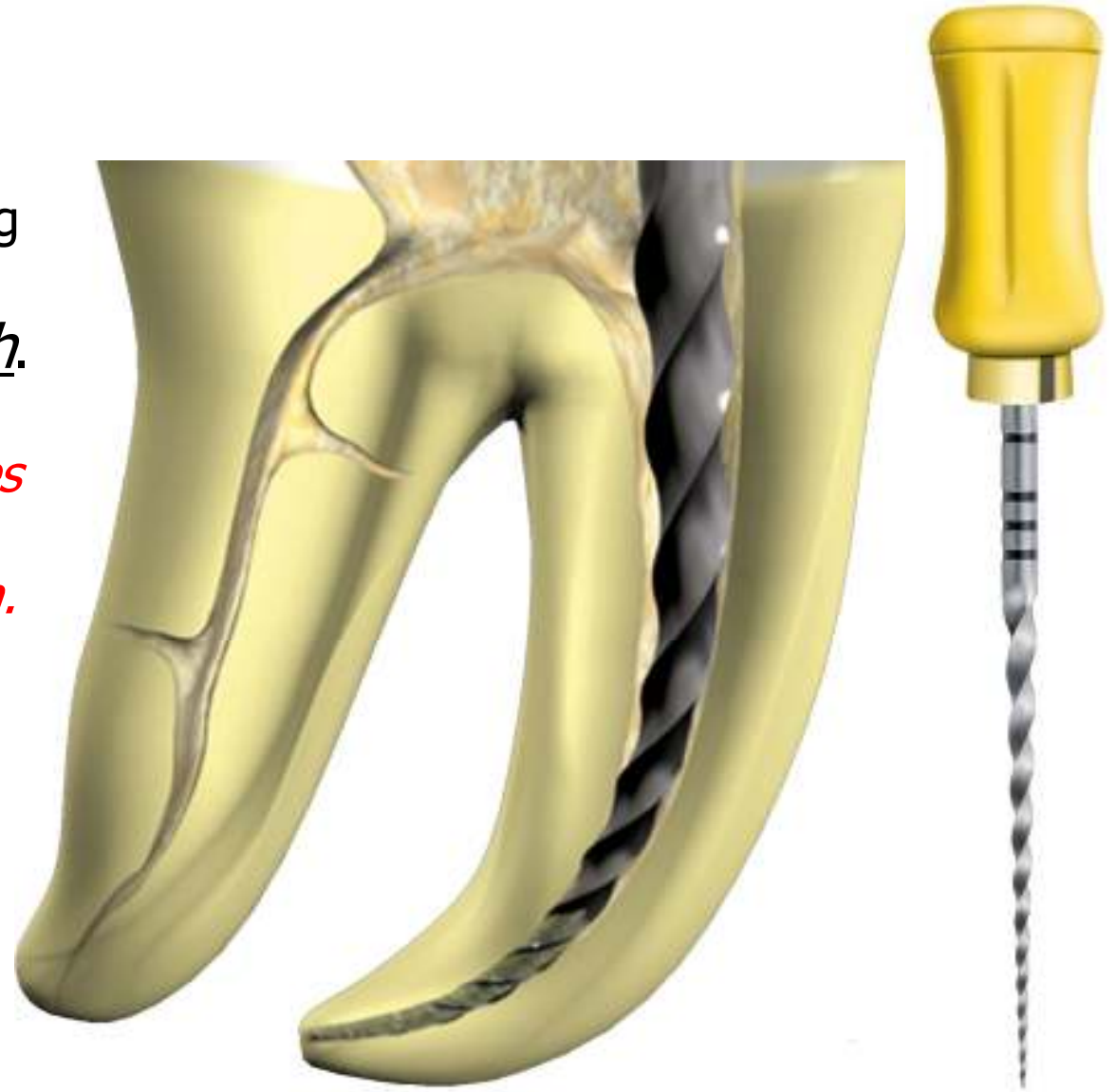


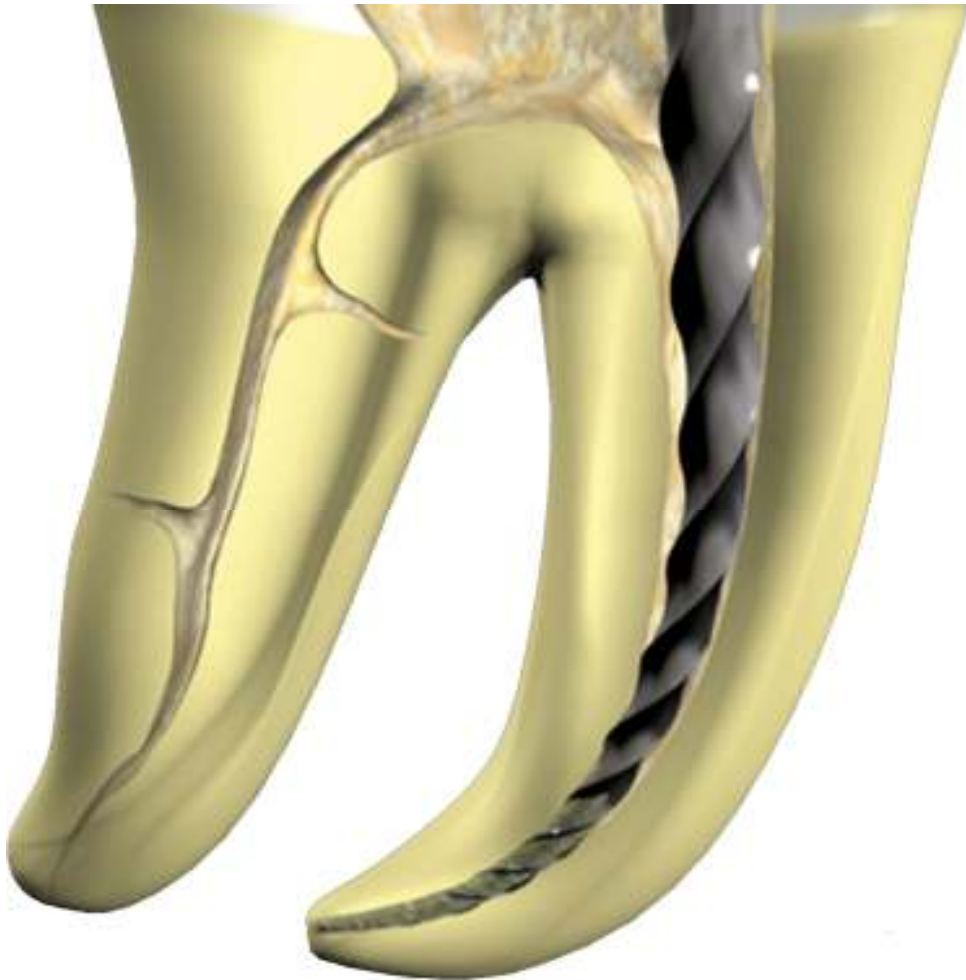


6- When S1 reaches working length,
use S2 to working length.

7- When S2 reaches working length,
use *F1 to working length.*

*When a finishing file reaches length,
It is immediately withdrawn.*

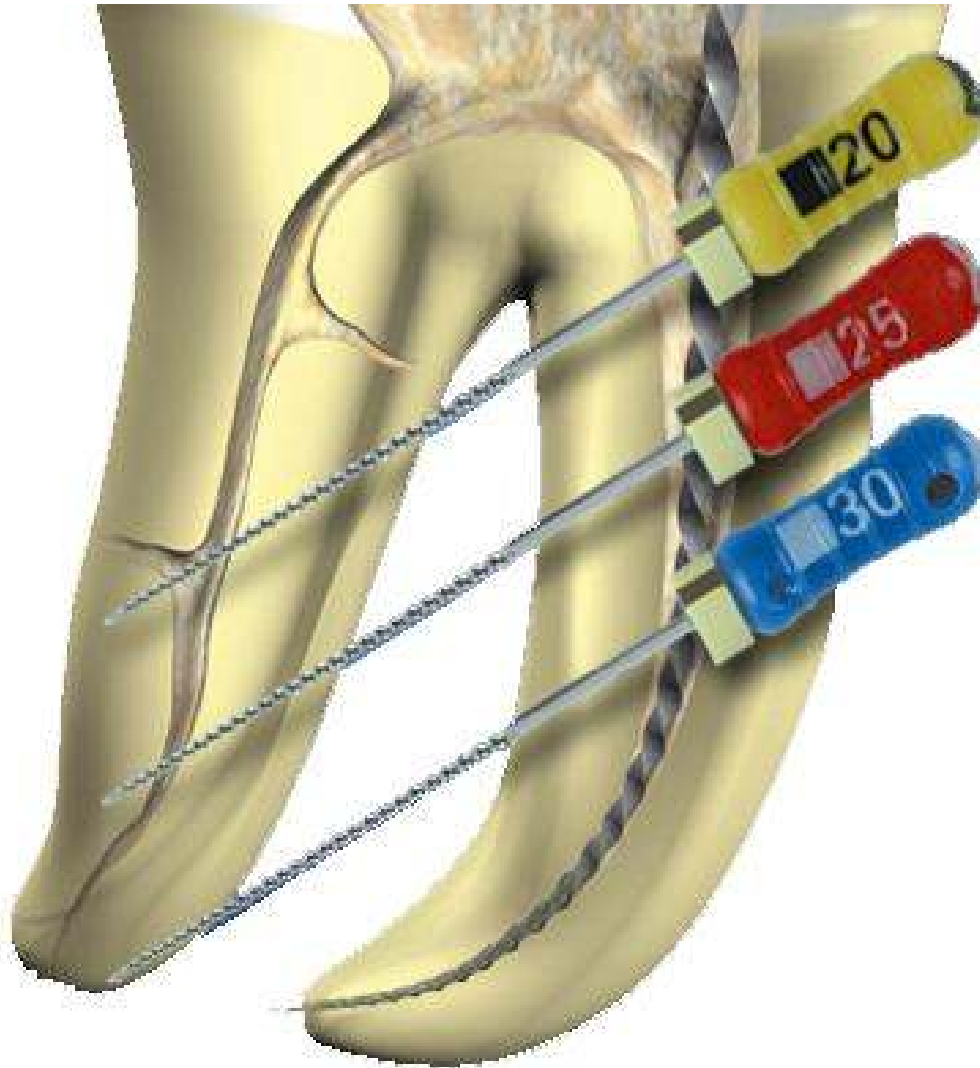




7- When F1 reaches working length,
use F2 to working length.

*When a finishing file reaches length,
It is immediately withdrawn.*

8- Gauge the diameter of the foramen with stainless steel files and if the foramen is larger than 25, use F3, F4 or F5 to working length, according to the real apical diameter.



If Necessary



CAUTION !

When a finishing file reaches length, it is immediately withdrawn.